

# Softshade™

## INSTALLATION INSTRUCTIONS - STANDARD AND TOP DOWN/BOTTOM UP BLINDS

NOTE: Do not attach the headrail to the bracketrail prior to installation.

### STEP 1 Attaching the bracketrail

#### Recess Fitting

Screw holes are pre-punched on the top and back of the bracketrail to provide proper load support. Simply mount the bracketrail to the top of the window frame using one screw on each end and one in the centre if necessary. Use the inner pre-drilled hole. The outer hole is used to lock the end cap in place.

#### Wall or Ceiling Fitting (no spacer blocks)

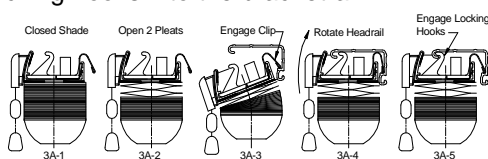
Centre the bracketrail over the window opening at the desired height. Screw holes are pre-punched in the bracketrail to provide proper load support. Simply mount the bracketrail to the mounting surface using one screw on each end and one in the centre if necessary. Use the inner pre-drilled hole. The outer hole is used to lock the end cap in place.

#### Wall or Ceiling Fitting (with spacer blocks)

Spacer blocks are used if you need to project the blind out from the mounting surface. Follow above instructions, but prior to mounting bracketrail, ensure spacer blocks are snapped into the back of bracketrail screw holes, then screw into mounting surface.

### STEP 2 Attaching the headrail/blind

1. Shown is the end view of the blind with the fabric in closed position.
2. Drop the blind slightly (one to two pleats) from the headrail by momentarily releasing the cord lock.
3. With the bracketrail installed, angle the back of the headrail up into the bracketrail to seat all clips onto the bracketrail ledge as shown.
4. Gently push the headrail into the bracketrail and rotate it up to the top of the bracketrail.
5. With all clips still seated on the ledge, pull the headrail forward slightly to engage all the locking hooks into the bracketrail.



### STEP 3 Attaching optional hold-down clips

Hold-down clips are used to secure the bottomrail of the blind in situations where excessive movement may be a problem. Insert the pins of the hold-down clips into the holes in the bottomrail end caps. If the holes are not present, remove the end caps from the bottomrail and punch the holes through the end caps from the back. Replace the end caps. Lower the blind completely and mark the position where clips will be mounted. Attach the clips with the screws provided.

#### Operating your blind

To raise and lower the blind, unlock the blind by pulling the cord at an angle toward the centre of the blind (with cord near blind). Then raise or lower blind to desired position. Lock blind into position by moving the cord back to the outside edge of the blind. Note: Pulling cords straight down or away from the blind (outside of blind edge or toward you) will cause cord abrasion and eventual breakage.

# Softshade™

## Removing your blind

Simply push headrail in and pull down gently.

## INSTALLATION INSTRUCTIONS - ARCH BLINDS

NOTE: Do not attach the headrail to the bracketrail prior to installation.

### STEP 1 Attaching the bracketrail

#### Recess Fitting

Screw holes are pre-punched on the bottom and back of the bracketrail to provide proper support. Simply mount the bracketrail to the sill of the window frame using the screws provided.

#### Wall or Ceiling Fitting (with spacer blocks)

Spacer blocks are used to project the blind out from the mounting surface. Prior to mounting bracketrail, be sure spacer blocks are snapped into the back of bracketrail screw holes. (Screw holes are pre-punched in the bracketrail to provide proper load support.) Centre the bracketrail under the arch opening at the desired position.

Simply mount the bracketrail to the mounting surface using the screws provided.

### STEP 2 Attaching the sillrail (rail attached to fabric)

Angle the sillrail slightly and place the back of the sillrail into the back of the bracketrail. Push the sillrail in and down gently until it snaps into place. Before attaching the second sillrail, attach the arch support clips.

### STEP 3 Attaching the arch support clips

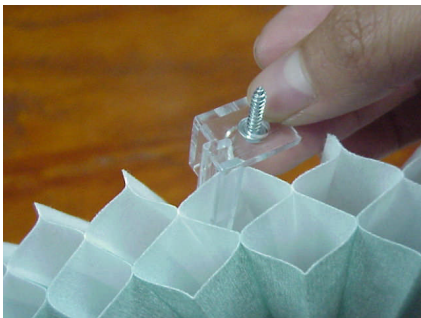
Fan the fabric into an arch. Starting at the top centre, mark the positions of the support clips, making sure they are evenly spaced and are located to the back side of the fabric. Un-fan the arch. Attach the clips using screws provided.

### STEP 4 Attaching the second sillrail

Fan the fabric into an arch and attach the second sillrail following STEP 2.

### STEP 5 Supporting the fabric

Gently pull down the blind fabric and position the fabric pleats between the two fingers on the arch clip. Repeat for all clips.



### STEP 6 Inserting adjustable arch plug

Adjust arch plug to desired depth and insert it through the arch space between sillrails so it rests securely on bracketrail.